

KEY FEATURES

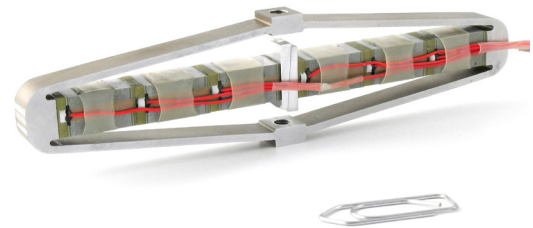
- > Low voltage piezo ceramic
- > Optimal preload for high dynamics
- > Mechanical Amplification
- > Compact Size
- > High Resolution

RELATED PRODUCTS

- > CTEC benchtop controllers
- > CTEC OEM controllers

AVAILABLE OPTIONS

- > SG sensor
- > Vacuum compatibility
- > Non magnetic shell
- > Option C1: Alternative ceramic



NON CONTRACTUAL PICTURE

PARAMETER	VALUE	UNIT
> Quasistatic performances		
Nominal Stroke ⁽¹⁾	870	µm
Min stroke	780	µm
Resolution ⁽²⁾	49	nm
Blocked force	350	N
Stiffness	0.40	N/µm
> Dynamic performances		
Resonance frequency (free-free) ⁽³⁾	1 300	Hz
Resonance frequency (blocked-free) ⁽⁴⁾	290	Hz
Force limit ⁽⁵⁾	110	N
> Control & driving		
Voltage range	-20 ... 150	V
Capacitance ⁽⁶⁾	26	µF
> Dimensions & interfaces		
Height	35	mm
Length	145	mm
Width incl wires	16	mm
Mass	190	g
> Standard mechanical interfaces	See ICD	
> Electrical interface	See ICD	

ANNOTATIONS

(1) Value for C1 option: +10%

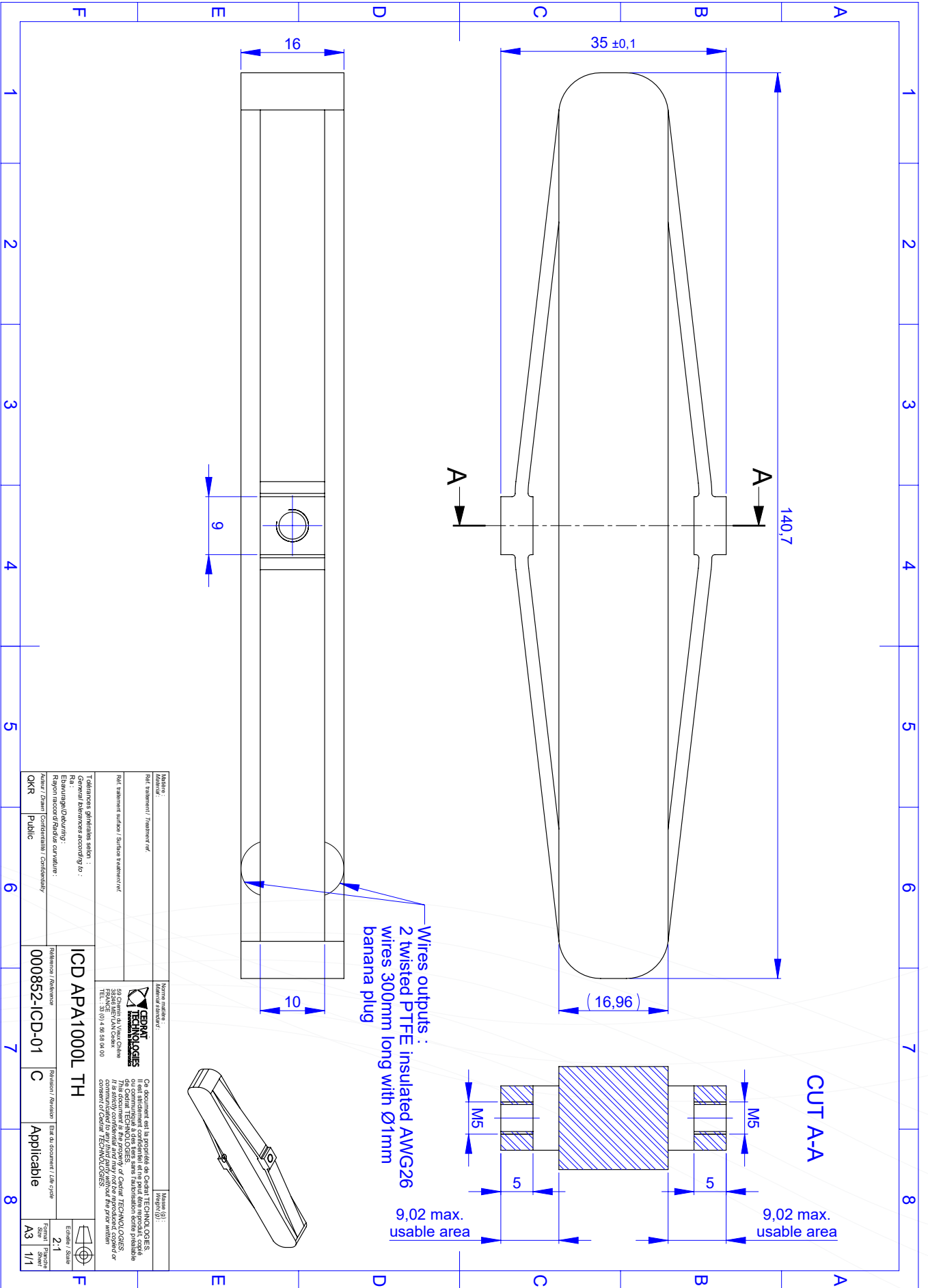
(2) Quasistatic excitation. With standard LA75 range amplifier. SNR=85 dB computed as RMS output signal / RMS output Noise floor at [0;200 Hz]

(3) Free-free: The actuator mounts are free

(4) Blocked-free: The actuator is fixed to a mechanical support assumed infinitely stiff

(5) Maximum pulling or pushing external force, valid up to 90% of the blocked-free resonance frequency of the actuator

(6) Capacitance +/- 20%, at 1 V RMS, low frequency, without load. Value for C1 option: +50%



Wires outputs :
2 twisted PTFE insulated AWG26
wires 300mm long with Ø11mm
banana plug

Material: Aluminum / Titane	Material (2): Aluminum / Titane
Ref. treatment / Treatment ref: Anodized / Polished	Material (3): Aluminum / Titane
Ref. treatment surface / Surface's treatment ref: Anodized / Polished	Material (4): Aluminum / Titane
Technical specifications refer to: General references according to: Rais: Echelle/Scale/Drawing: Rajout rajout/Revision curve/curve: Author / Drawn Confidentiality / Confidentiality: OKR Public	Material (5): Aluminum / Titane
Reference / Référence: 000852-ICD-01	Material (6): Aluminum / Titane
Revision / Révision: C	Material (7): Aluminum / Titane
Applicable: Applicable	Material (8): Aluminum / Titane
ICD APA1000L TH	Material (9): Aluminum / Titane
2-1	Material (10): Aluminum / Titane
A3	Material (11): Aluminum / Titane
1/1	Material (12): Aluminum / Titane